

Tree species delimitation in tropical forest inventories: perspectives from a taxonomically challenging case study

Paulo Henrique Gaem^{a,*}, Ana Andrade^b, Fiorella Fernanda Mazine^a & Alberto Vicentini^c

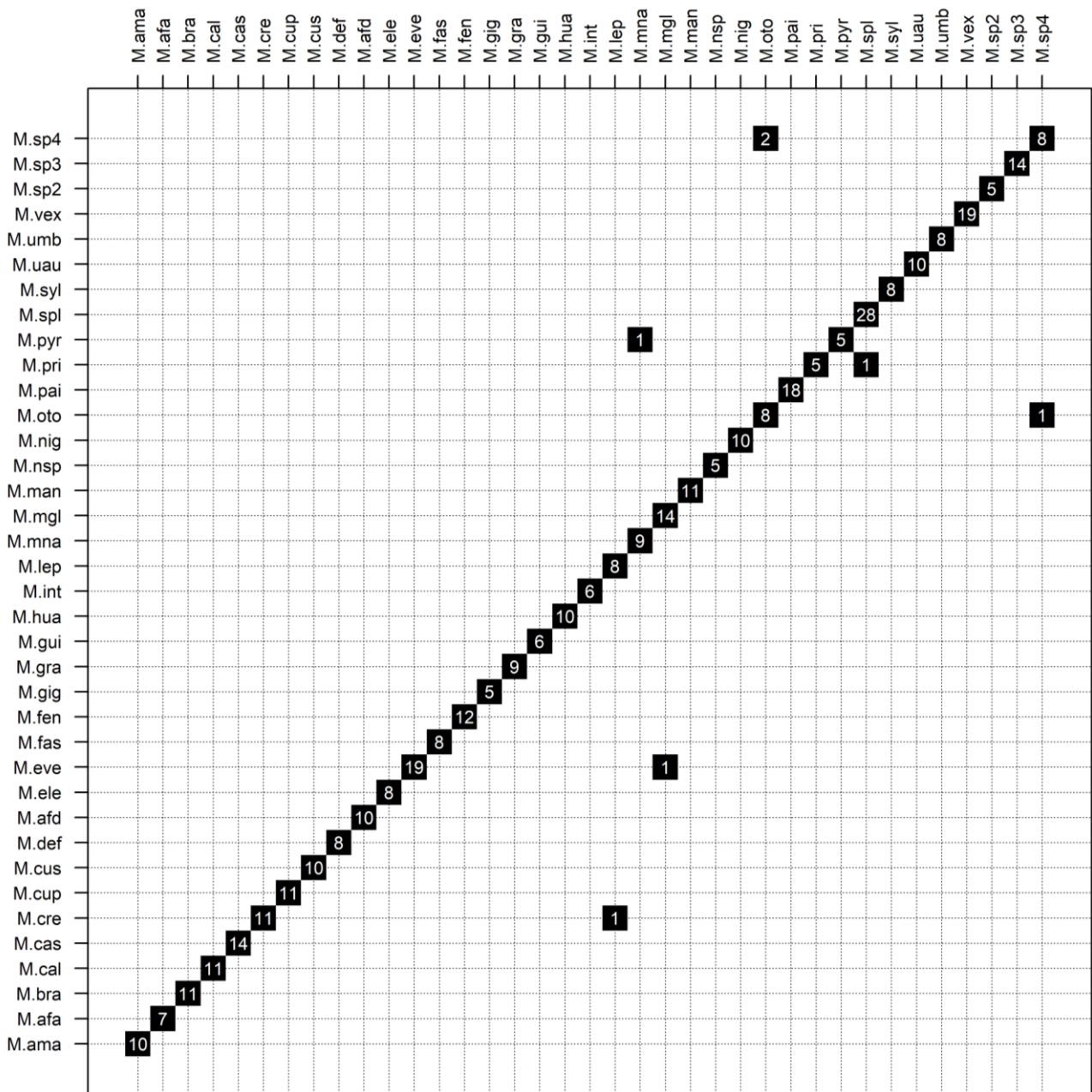
^a Grupo de Pesquisa em Ecologia, Sistemática e Conservação de Recursos Naturais, Universidade Federal de São Carlos, Campus Sorocaba, Rodovia João Leme dos Santos (SP-264), km 110, 18052-780, Sorocaba, SP, Brazil

^b Projeto Dinâmica Biológica de Fragmentos Florestais, Instituto Nacional de Pesquisas da Amazônia, Avenida André Araújo, 2936, 69067-375, Manaus, AM, Brazil

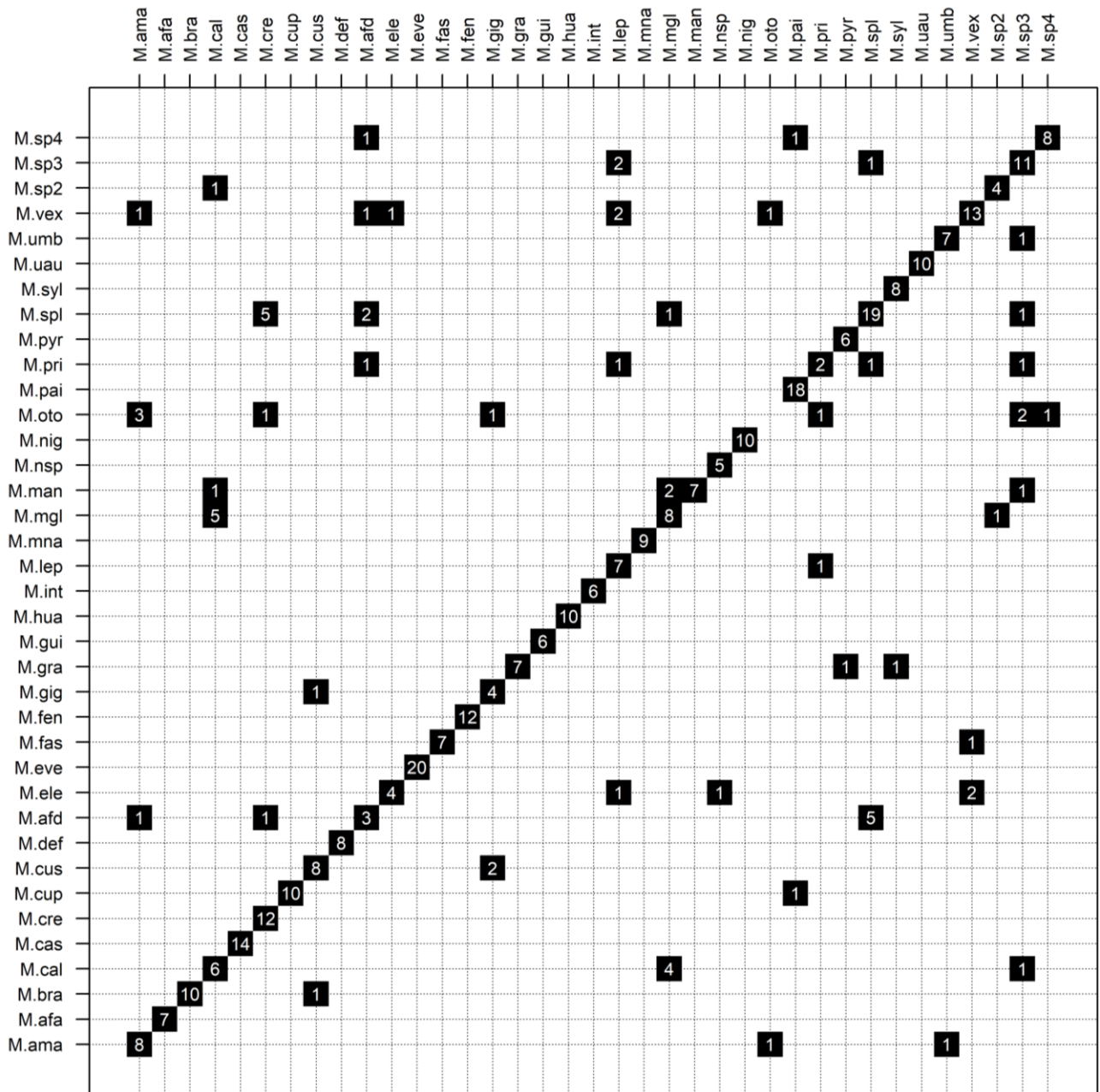
^c Laboratório de Botânica Amazônica, Programa de Pós-Graduação em Botânica, Instituto Nacional de Pesquisas da Amazônia, Avenida André Araújo, 2936, 69067-375, Manaus, AM, Brazil

* Corresponding author

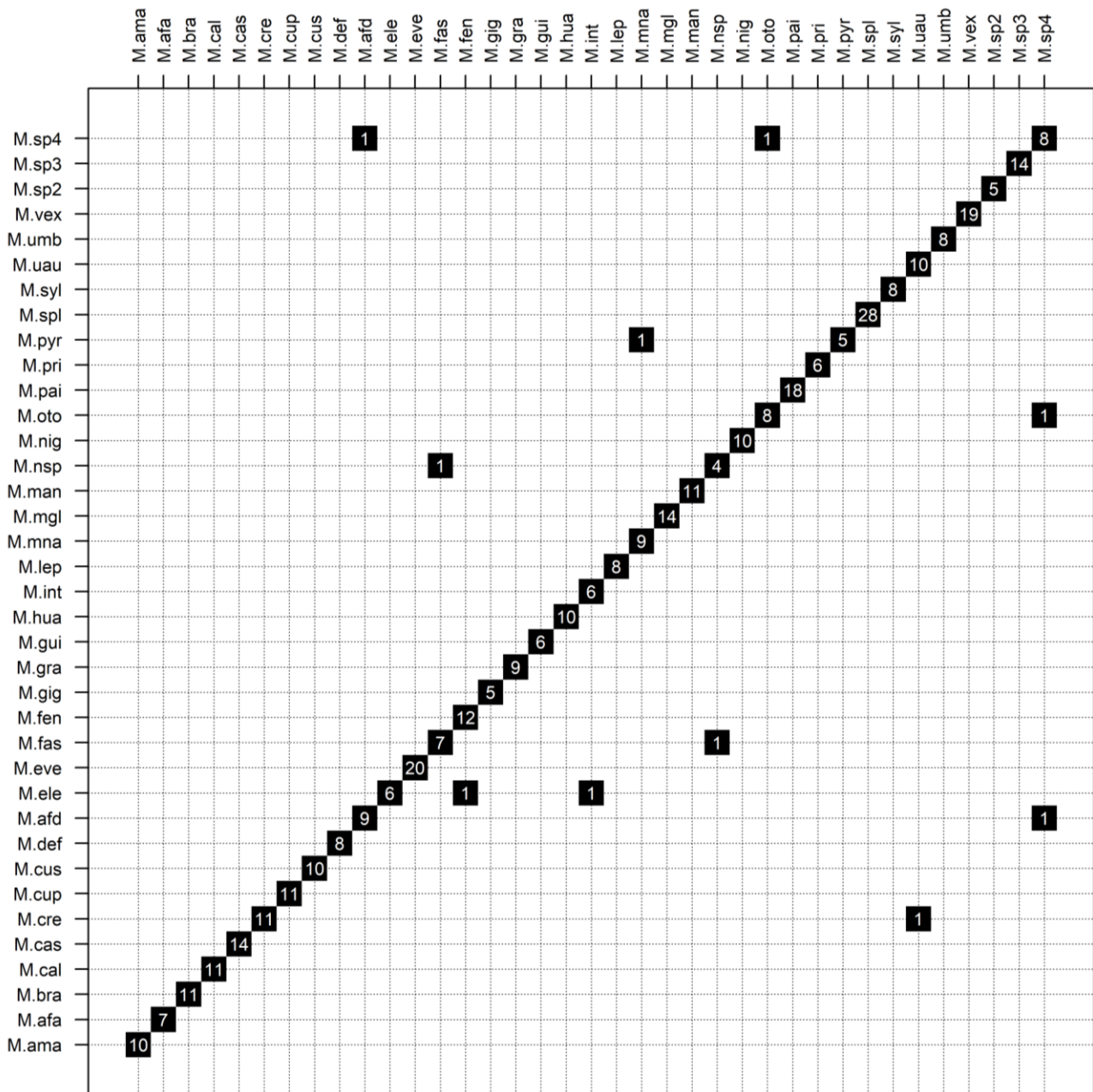
Supplementary File 4. Confusion matrixes between given and predicted species identity in all tested linear discriminant models. Abbreviations of species names are presented according to Figure 1.



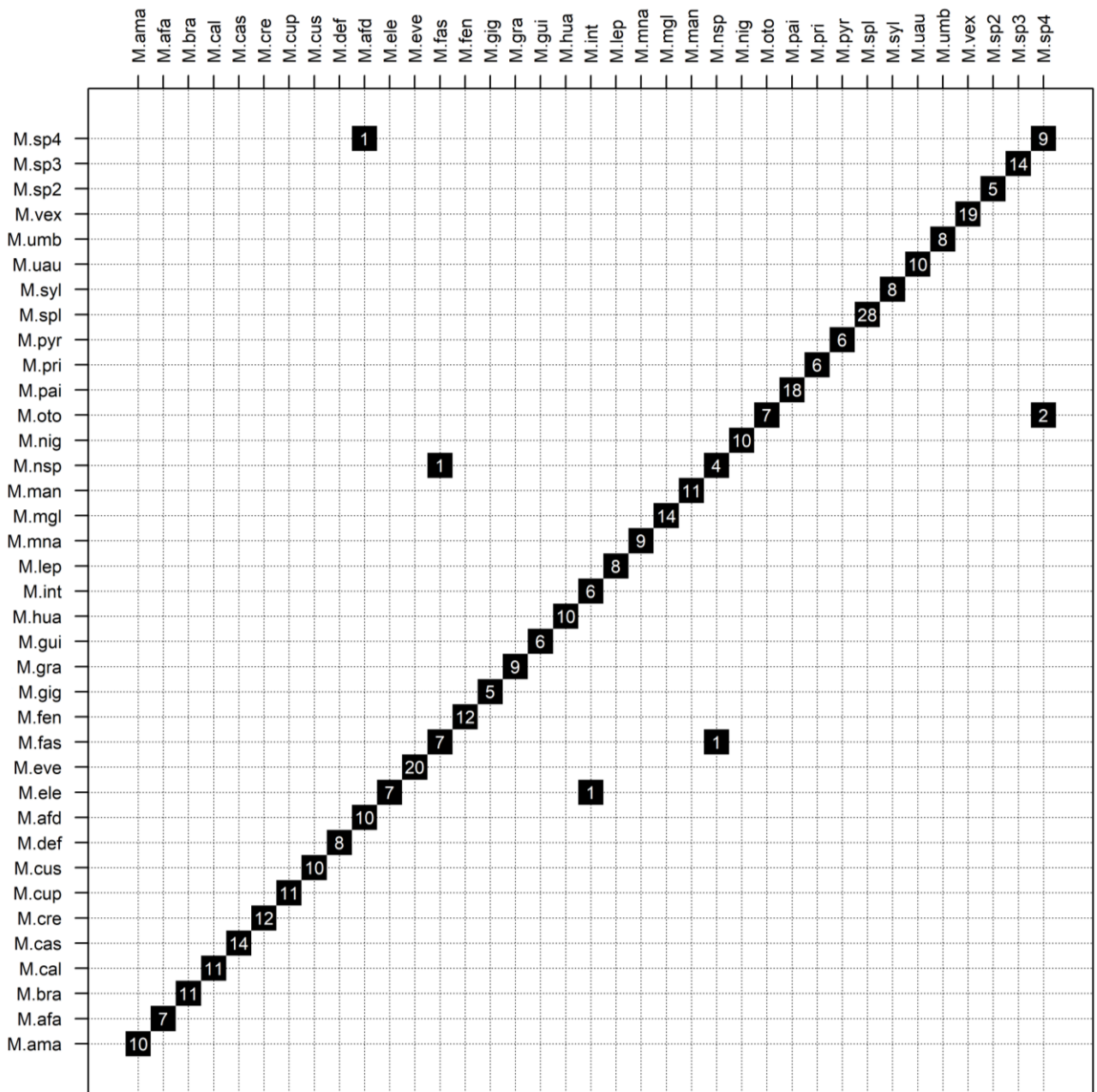
SF4-A. Confusion matrix between given (rows) and predicted (columns) species identity in the Total NIRS model using the morphotype-based classification.



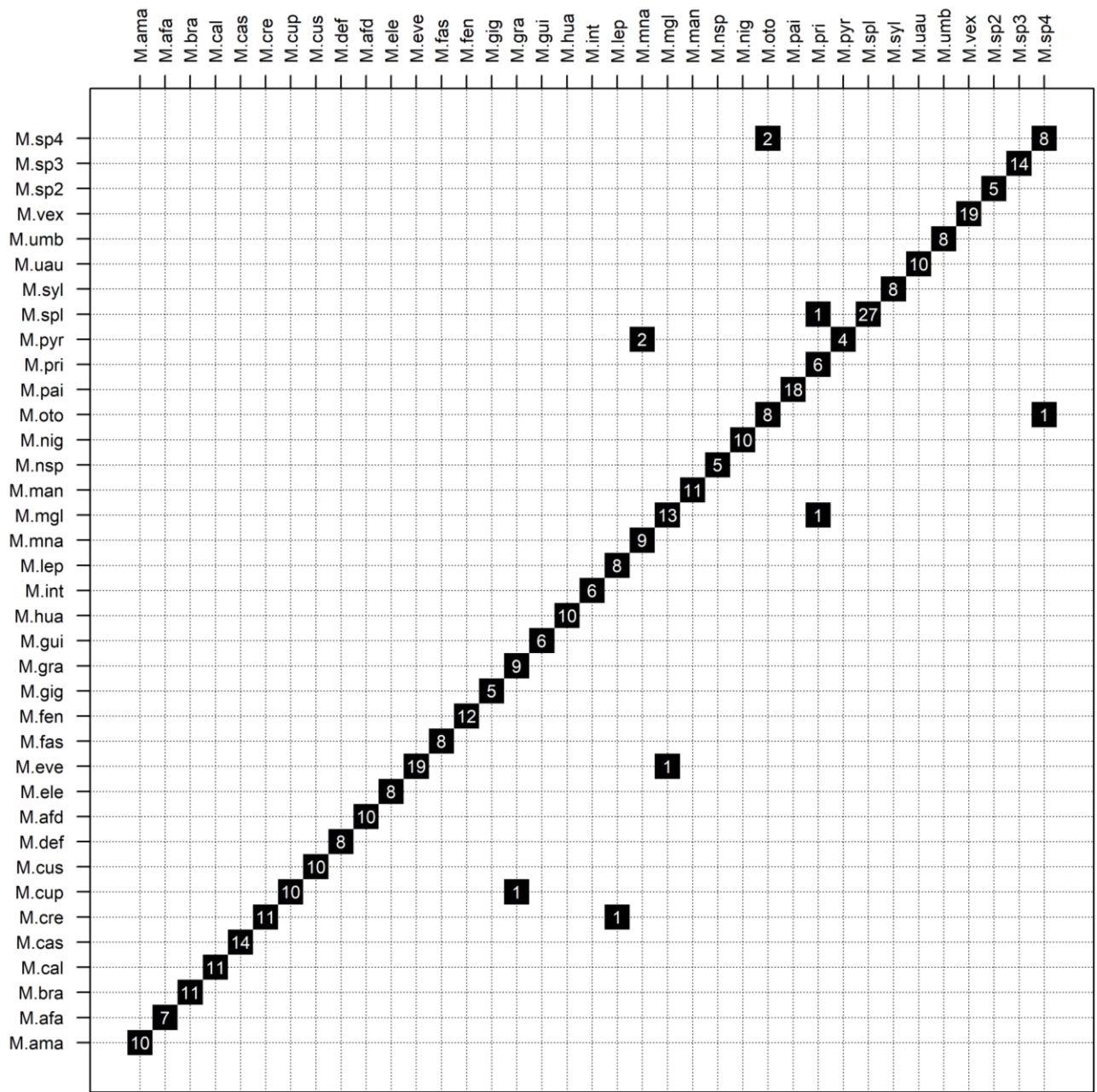
SF4-B. Confusion matrix between given (rows) and predicted (columns) species identity in the Morphometrics model using the morphotype-based classification.



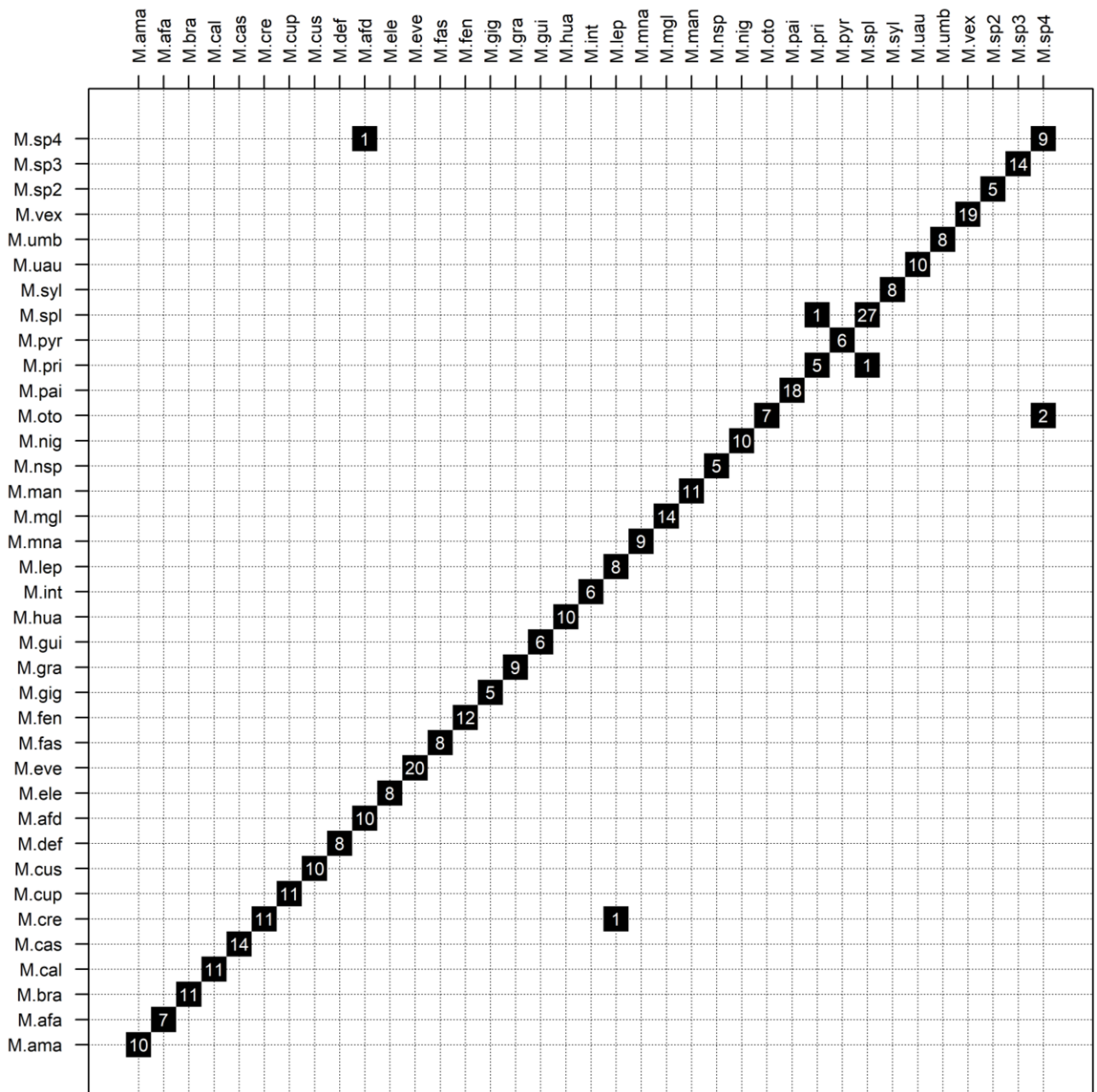
SF4-C. Confusion matrix between given (rows) and predicted (columns) species identity in the Stepwise-selected NIRS model using the morphotype-based classification.



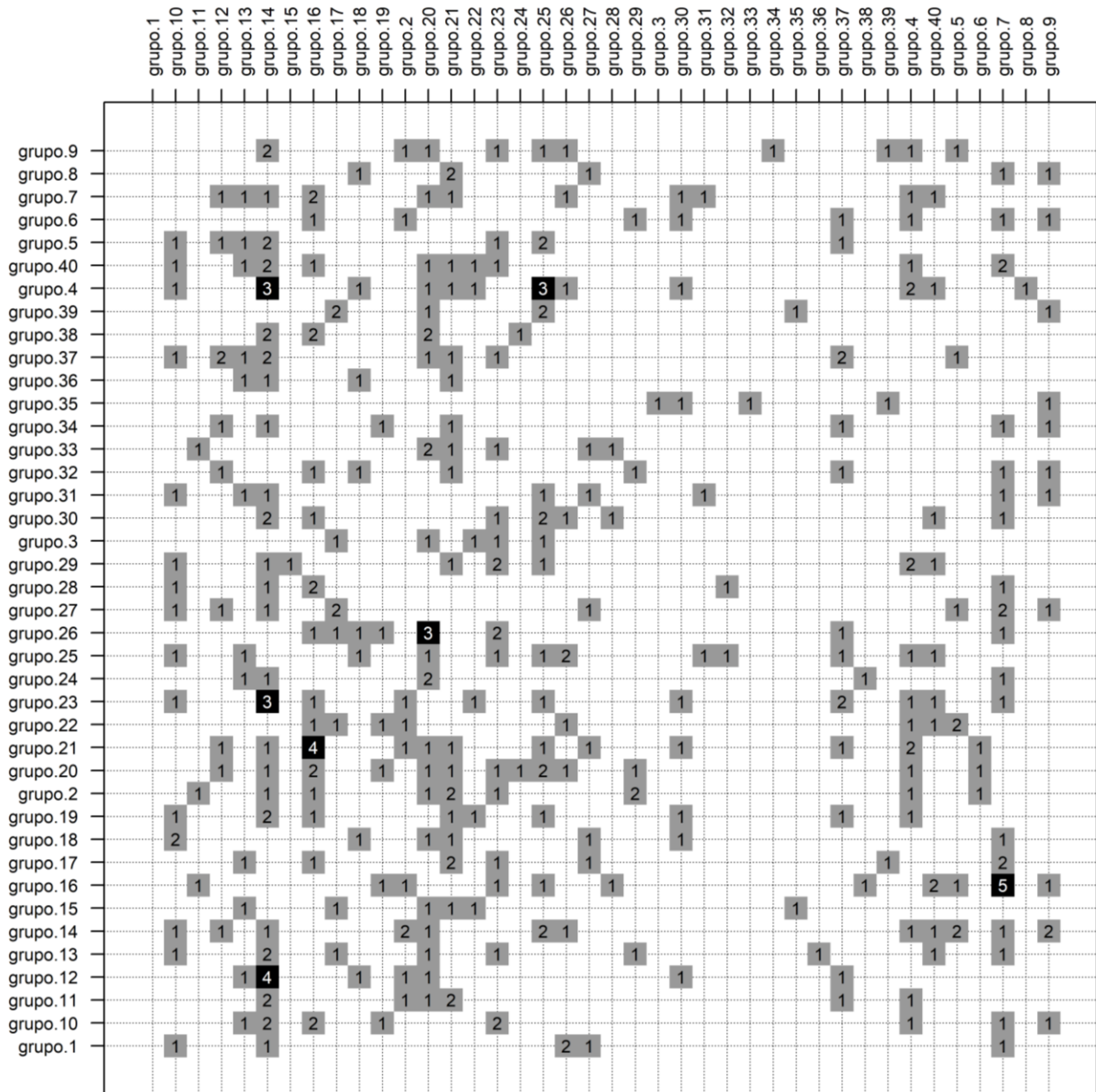
SF4-D. Confusion matrix between given (rows) and predicted (columns) species identity in the Stepwise-selected NIRS+Morphometrics model using the morphotype-based classification.



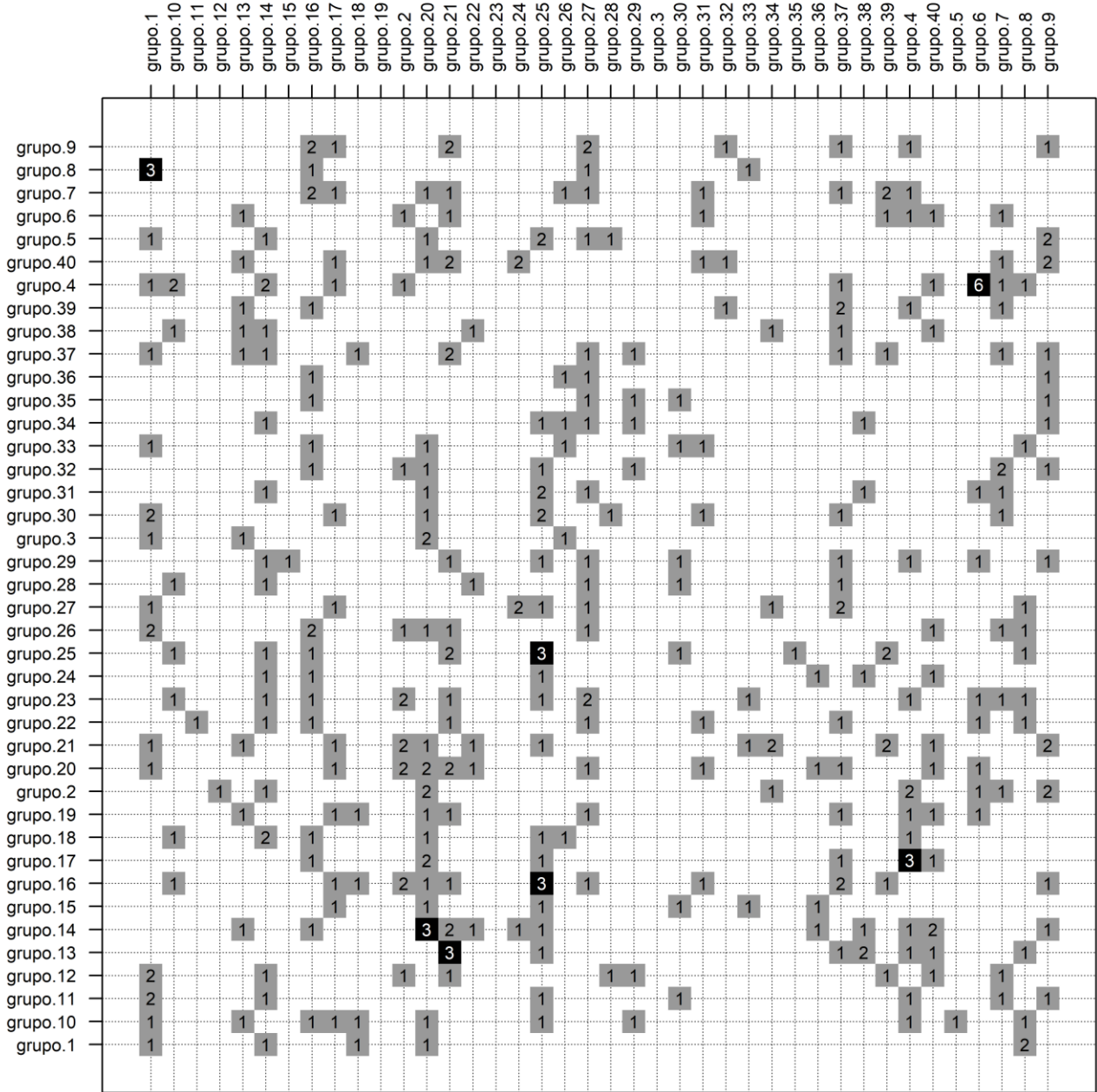
SF4-E. Confusion matrix between given (rows) and predicted (columns) species identity in the PCA-reduced NIRS model using the morphotype-based classification.



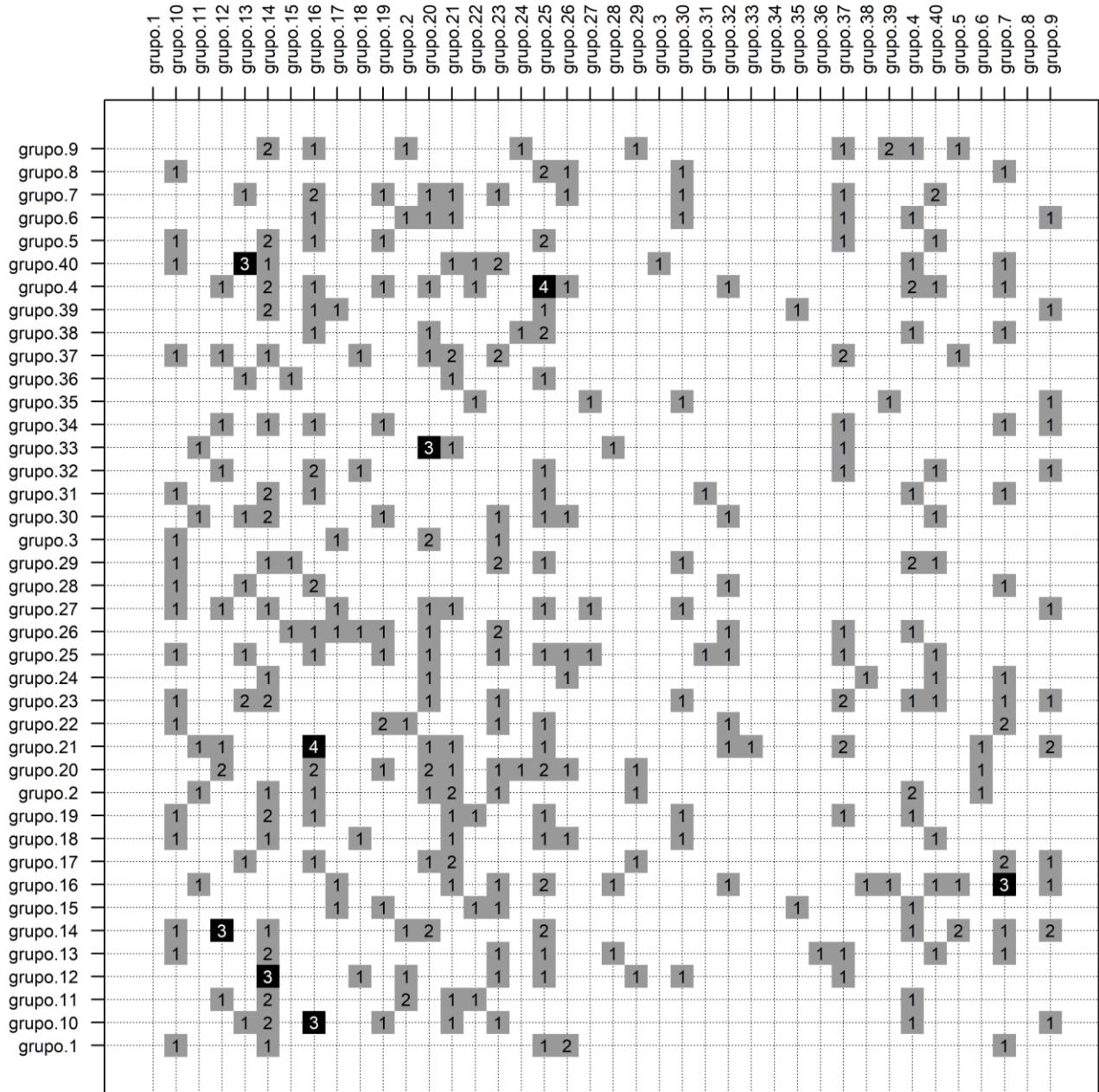
SF4-F. Confusion matrix between given (rows) and predicted (columns) species identity in the PCA-reduced NIRS+Morphometrics model using the morphotype-based classification.



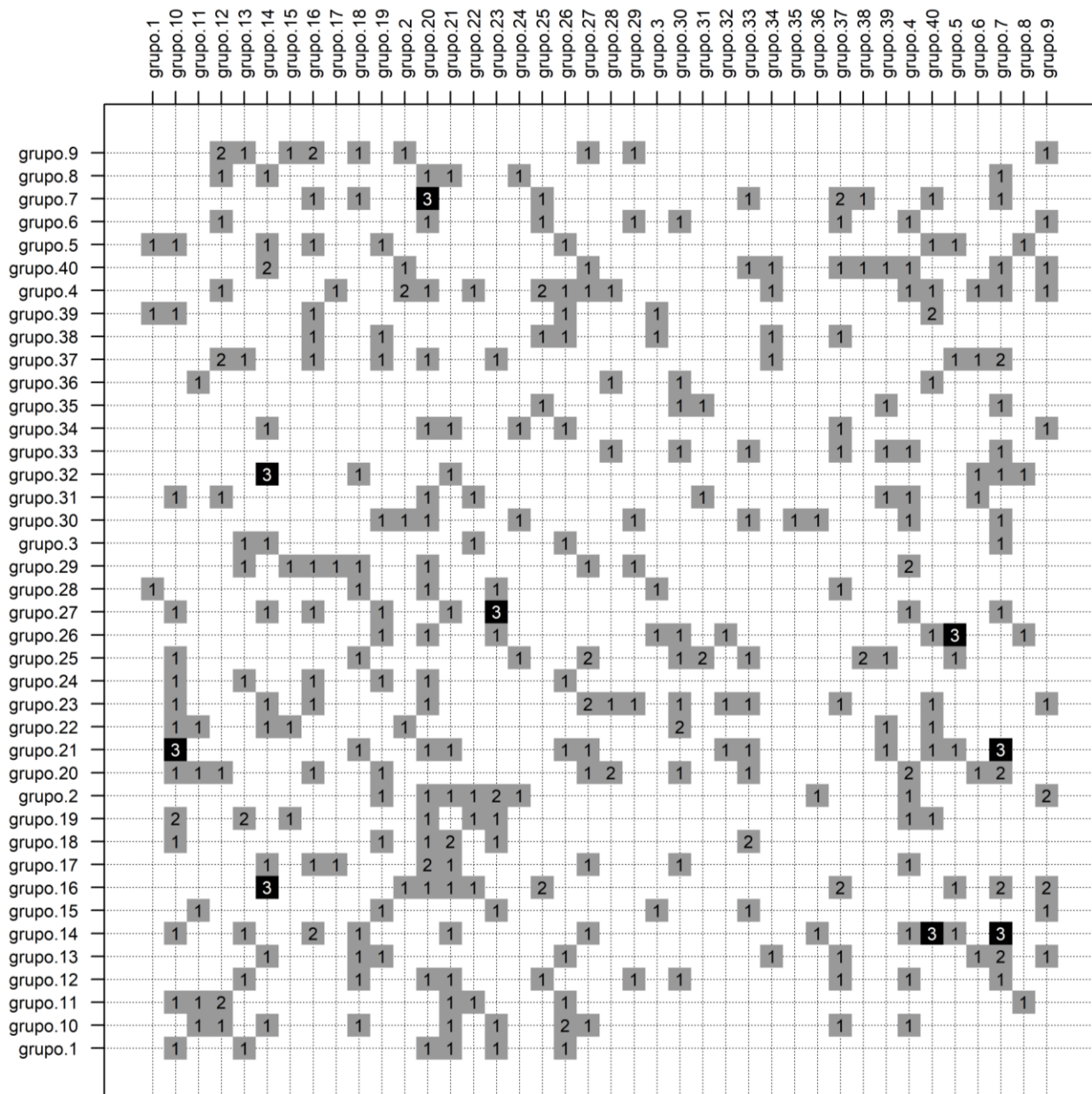
SF4-G. Confusion matrix between given (rows) and predicted (columns) species identity in the Total NIRS model using the aleatory classification.



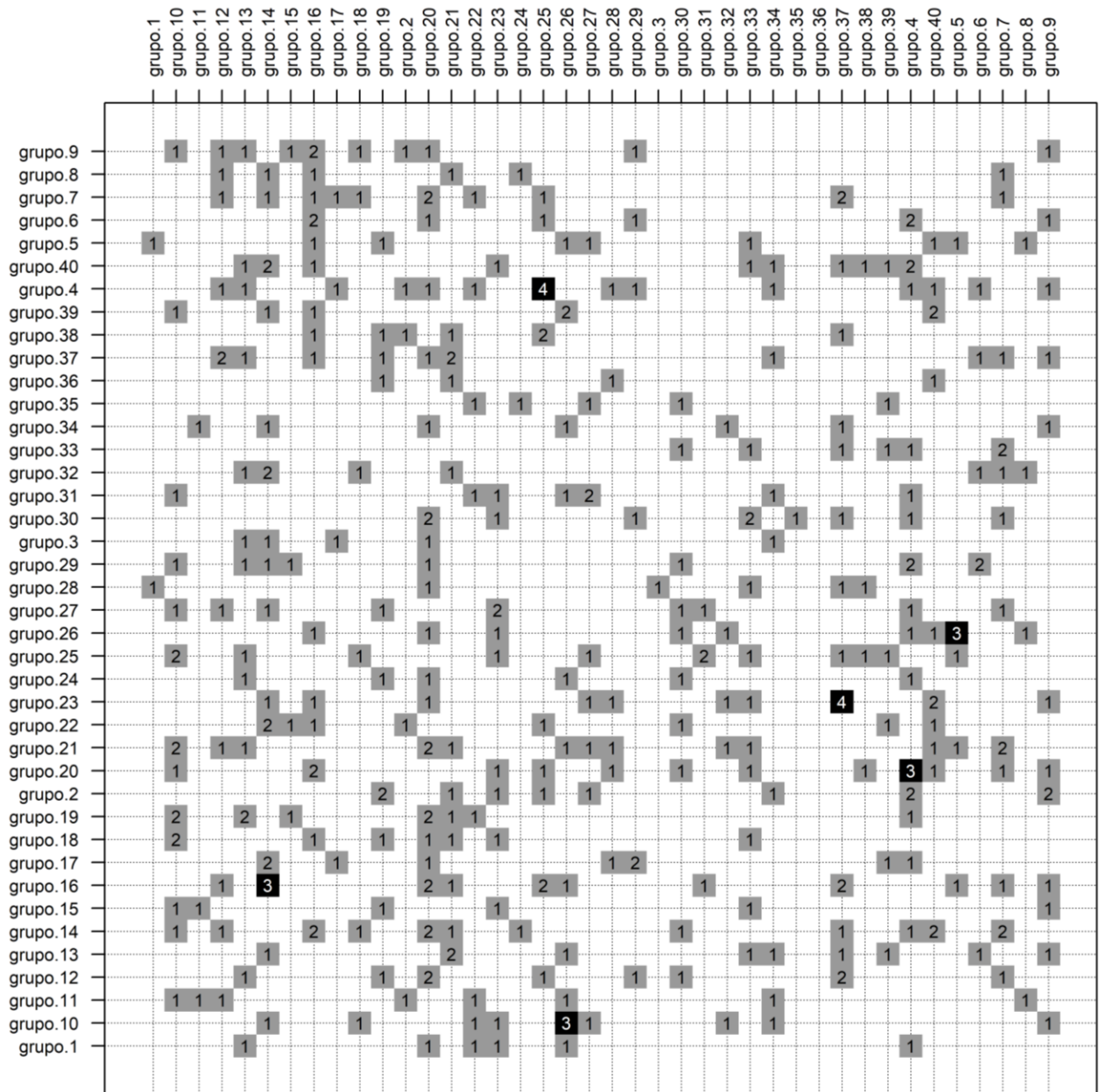
SF4-H. Confusion matrix between given (rows) and predicted (columns) species identity in the Morphometrics model using the aleatory classification.



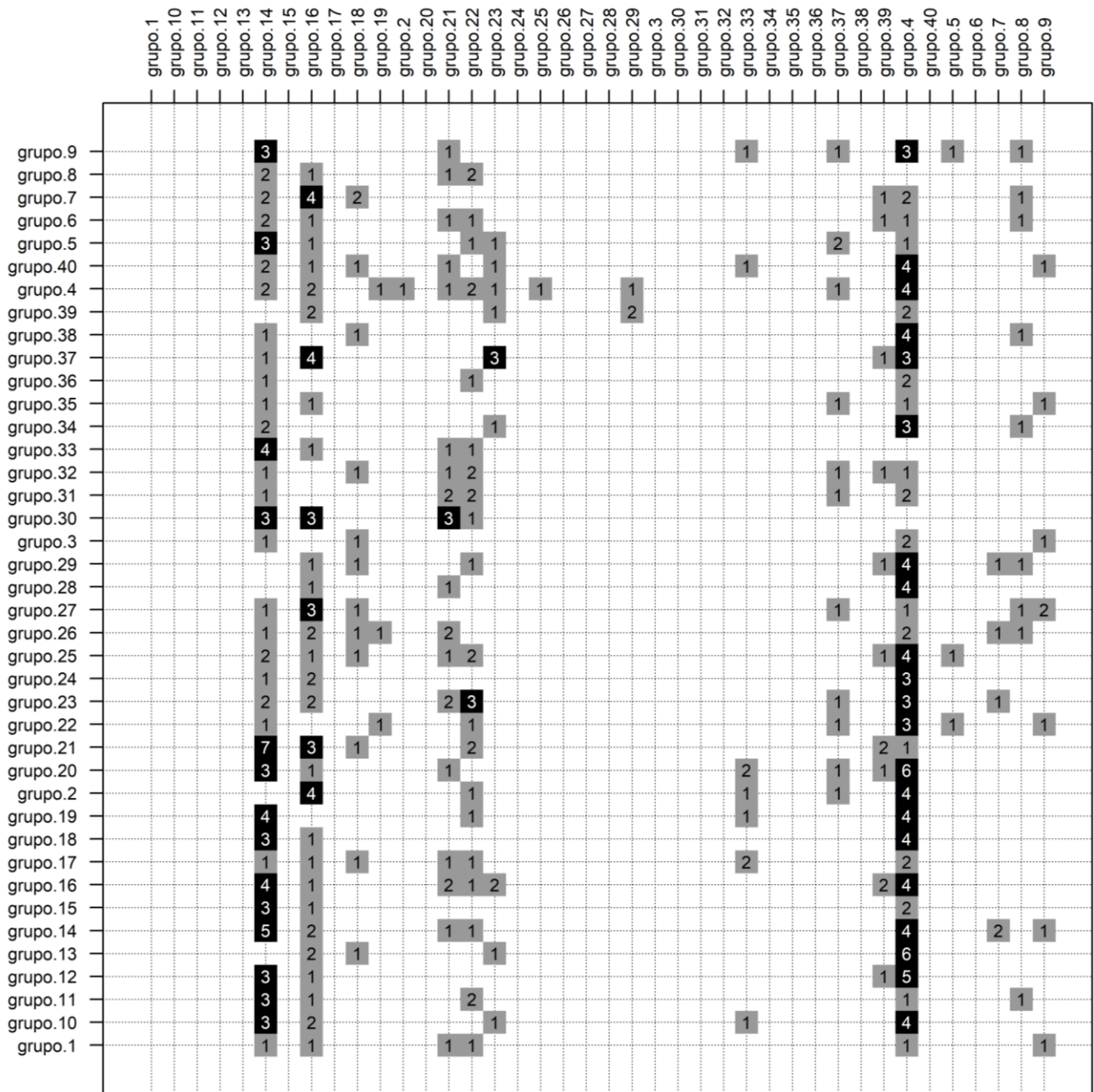
SF4-I. Confusion matrix between given (rows) and predicted (columns) species identity in the Total NIRS+Morphometrics model using the aleatory classification.



SF4-J. Confusion matrix between given (rows) and predicted (columns) species identity in the Stepwise-selected NIRS model using the aleatory classification.



SF4-K. Confusion matrix between given (rows) and predicted (columns) species identity in the Stepwise-selected NIRS +Morphometrics model using the aleatory classification.



SF4-L. Confusion matrix between given (rows) and predicted (columns) species identity in the PCA-reduced NIRS model using the morphotype-based classification.

